

PORTABLE DUST COLLECTORS



MIXING · BLENDING · BATCHING · PRODUCTION · PROCESSING

Tiger-Vac[®]
...The name to vacuum with

SPECIALIZING IN THE DESIGN AND MANUFACTURE
OF LEGALLY CERTIFIED PORTABLE INDUSTRIAL VACUUM
AND DUST COLLECTION SYSTEMS FOR CONTAMINATION
CONTROLLED ENVIRONMENTS AND HAZARDOUS LOCATIONS
Since 1983

CONTROL AND CONTAIN FUGITIVE AIRBORNE DUST

Our range of portable industrial dust collectors are a safe and effective solution to mitigate the migration of industrial processes airborne contamination by capturing and controlling the dust at the source. Our portable Dust Collectors allow for greater flexibility in your processing areas by positioning the Dust Collector next to the source where the dust is being generated before it spreads throughout the work area.

All our portable industrial dust collectors are NRTL Certified, for either Ordinary Locations or Division I and Division II Hazardous Locations; available in painted and stainless steel depending upon your application requirements.

You can choose to either attach one or two of our 6' 6" or 10' flexible arms enabling you to position the arm directly next to the source of the Dust Generation or connect the Portable Dust Collector directly to an existing shroud, hood assembly or into a High Efficiency Cyclone when recovering larger quantities of powder. **A professional combination of these methods and working practices result in high safety and an efficient, clean production.**

WORKER HEALTH AND SAFETY

Dust control is the single most important factor in preventing fires or explosions in any dust-generating workplace. Effective dust control can reduce the risk of a catastrophic fire or explosion in the workplace. However, if a dust control system isn't designed or working properly, it may create conditions that would support a dangerous fire or explosion. The most effective way to reduce the risk associated with combustible dust is to eliminate its source. If that's not possible, you can use other risk controls. When you're choosing risk controls, start by asking yourself the questions contained in the following steps, which are listed in descending order of effectiveness.

Elimination or Substitution

Eliminate the hazard by substituting a safer process or material where possible, which is the most effective control.

Engineering Controls

Make physical modifications to facilities, equipment, and processes to reduce exposure.

Administrative Controls

Change your work practices and policies and provide awareness tools and training to limit the risk of combustible dust.

Personal Protective Equipment

Personal protective equipment is not an effective control measure for combustible dust explosions. However, where dust is produced you may also have other hazards to assess.



CD-600 **HEPA**

EX STAINLESS STEEL

VOLTAGE	120 V to 575 V
HERTZ	60 Hz
PHASE	Single or Three
WATTAGE	1150 W to 1725 W
POWER	1.5 HP to 2 HP
AMPERAGE	2.5 A to 15 A
AIR FLOW	600-700 CFM
WEIGHT	353 lb

SS SAE 304 STAINLESS STEEL CONSTRUCTION

50 Ft. CORD LENGTH

EX TEFC MOTOR EXPLOSION PROOF / DUST IGNITION PROOF

MOTOR THERMAL OVERLOAD

600-700 CFM AIR FLOW

SAFE FROM ELECTROSTATIC DISCHARGES
ESD SAFE

Continuous Duty 24-7

SINGLE PHASE **THREE PHASE**

DIVISION 1

CLASS I - GROUP D
CLASS II - GROUPS F, G, T3C
GROUP E (METAL DUST)
MOTOR AND SWITCH AVAILABLE



GUARANTEED FOR THE SAFE RECOVERY OF COMBUSTIBLE / CONDUCTIVE DUSTS

HEPA EFFICIENCY OF 99.99% AT 0.3 MICRON

DIVISION 2

CLASS I - GROUP D
CLASS II - GROUPS F, G, T3C

Designed to capture Airborne / Fugitive Dust

- The primary stage of filtration is an Aluminized Spun Bond Cartridge with a Filtration Efficiency of 97% at 0.3 micron
- Downstream HEPA Filter with an Efficiency of 99.99% at 0.3 micron
- Low Pressure, High Flow rate. 600-700 CFM (1020-1190 m³/h)
- Filter Cartridge Pulse Cleaning (manual or automatic)

DIVISION 1

CLASS I - GROUP D
CLASS II - GROUPS F, G, T3C
GROUP E (METAL DUST)
MOTOR AND SWITCH AVAILABLE



GUARANTEED FOR THE SAFE RECOVERY OF COMBUSTIBLE / CONDUCTIVE DUSTS

3rd PARTY CERTIFIED THIRD PARTY CERTIFIED

DIVISION 2

CLASS I - GROUP D
CLASS II - GROUPS F, G, T3C

AVAILABLE
Downstream HEPA Filter with 99.97% Efficiency at 0.3 micron

CD-1200

EX STAINLESS STEEL

VOLTAGE	230 V to 575 V
HERTZ	60 Hz
PHASE	Three
WATTAGE	3700 W
POWER	5 HP
AMPERAGE	5 A to 12 A
AIR FLOW	1200 CFM
WEIGHT	473 lb

- Filter Cartridge Pulse Cleaning (manual or automatic timer)
- Primary Filter Cartridge made of Conductive Aluminized Spun Bond material

AVAILABLE

HEMIPLEAT® Conductive with Carbon Extreme Flame Retardant with an Efficiency of 99.99% on 0.5 micron

SS SAE 304 STAINLESS STEEL CONSTRUCTION

50 Ft. CORD LENGTH

EX TEFC MOTOR EXPLOSION PROOF / DUST IGNITION PROOF

MOTOR THERMAL OVERLOAD

1200 CFM AIR FLOW

SAFE FROM ELECTROSTATIC DISCHARGES
ESD SAFE

Continuous Duty 24-7

THREE PHASE



AVAILABLE DUST EXTRACTION ARM
• 1 x Ø8" (200 mm)
• 2 x Ø6" (150 mm)

AVAILABLE
HEMPILEAT® Conductive
with Carbon Extreme
Flame Retardant with
an Efficiency of 99.99%
on 0.5 micron



CD-600 CONDUCTIVE PAINT
EX PAINTED

VOLTAGE	120 V to 575 V
HERTZ	60 Hz
PHASE	Single or Three
WATTAGE	1150 W to 1725 W
POWER	1.5 HP to 2 HP
AMPERAGE	2.5 A to 15 A
AIR FLOW	600-700 CFM
WEIGHT	272 lb

- 3-STAGE** FILTRATION SYSTEM
- 50 FT.** CORD LENGTH
- TEFC MOTOR**
EXPLOSION PROOF / DUST IGNITION PROOF
- MOTOR**
THERMAL OVERLOAD
- 600-700 CFM** AIR FLOW
- SAFE FROM** ELECTROSTATIC DISCHARGES
ESD SAFE
- SINGLE PHASE**
- THREE PHASE**

DIVISION 1
CLASS I - GROUP D
CLASS II - GROUPS F, G, T3C

DIVISION 2
CLASS I - GROUP D
CLASS II - GROUPS F, G, T3C

GUARANTEED
FOR THE SAFE RECOVERY
OF COMBUSTIBLE /
CONDUCTIVE DUSTS

3rd PARTY
CERTIFIED
THIRD PARTY
CERTIFIED

Designed to capture Airborne / Fugitive Dust

3-STAGE FILTRATION SYSTEM

- Metal mesh Spark Trap Filter,
- Alumined Spun Bond Cartridge and Carbon After-Filter

Filtration Efficiency
of 97% at 0.3 micron

- Low Pressure, High Flow rate. 600-700 CFM (1020-1190 m³/h)
- Filter Cartridge Pulse Cleaning (manual or automatic)

DIVISION 1
CLASS I - GROUP D
CLASS II - GROUPS F, G, T3C

DIVISION 2
CLASS I - GROUP D
CLASS II - GROUPS F, G, T3C

GUARANTEED
FOR THE SAFE RECOVERY
OF COMBUSTIBLE /
CONDUCTIVE DUSTS

3rd PARTY
CERTIFIED
THIRD PARTY
CERTIFIED

AVAILABLE
HEMPILEAT® Conductive
with Carbon Extreme Flame
Retardant with an Efficiency
of 99.99% on 0.5 micron

CD-1200 CONDUCTIVE PAINT
EX PAINTED

VOLTAGE	230 V to 575 V
HERTZ	60 Hz
PHASE	Three
WATTAGE	3700 W
POWER	5 HP
AMPERAGE	5 A to 12 A
AIR FLOW	1200 CFM
WEIGHT	473 lb

- Low Pressure, High Flow rate. 1200 CFM (2000 m³/h)
- Filter Cartridge Pulse Cleaning (manual or automatic)

- 3-STAGE** FILTRATION SYSTEM
- 50 FT.** CORD LENGTH
- TEFC MOTOR**
EXPLOSION PROOF / DUST IGNITION PROOF
- MOTOR**
THERMAL OVERLOAD
- 1200 CFM** AIR FLOW
- SAFE FROM** ELECTROSTATIC DISCHARGES
ESD SAFE
- THREE PHASE**



AVAILABLE
DUST EXTRACTION ARM

- 1 x Ø8" (200 mm)
- 2 x Ø6" (150 mm)

Continuous Duty 24-7

TV-600

ORDINARY LOCATIONS

VOLTAGE	120 V to 575 V
HERTZ	60 Hz
PHASE	Single or Three
WATTAGE	1150 W to 1725 W
POWER	1.5 HP to 2 HP
AMPERAGE	2.5 A to 13.2 A
AIR FLOW	600-700 CFM
WEIGHT	272 lb

**3-STAGE**
FILTRATION
SYSTEM**50 FT.**
CORD
LENGTH**600-700 CFM**
AIR FLOW**MOTOR**
THERMAL
OVERLOAD*Continuous*
Duty 24-7**SINGLE**
PHASE**THREE**
PHASE**ORDINARY LOCATIONS**CLEANING MACHINES FOR UNCLASSIFIED (GENERAL PURPOSE) AREAS
ALL THE ELECTRICAL COMPONENTS ARE CERTIFIED
BY AN NRITL SUCH AS UL, CSA OR ETL**ORDLOC****Designed to capture Airborne / Fugitive Dust****3-STAGE FILTRATION SYSTEM**

- Metal mesh Spark Trap Filter,
- Aluminized Spun Bond Cartridge and Carbon After-Filter

Filtration Efficiency
of 97% at 0.3 micron

- Low Pressure, High Flow rate. 600-700 CFM (1020-1190 m³/h)
- Filter Cartridge Pulse Cleaning (manual or automatic)
- Heavy Duty Static Conductive wheels

**ORDINARY LOCATIONS**CLEANING MACHINES FOR UNCLASSIFIED (GENERAL PURPOSE) AREAS
ALL THE ELECTRICAL COMPONENTS ARE CERTIFIED
BY AN NRITL SUCH AS UL, CSA OR ETL**ORDLOC****TV-1200**

ORDINARY LOCATIONS

VOLTAGE	230 V to 575 V
HERTZ	60 Hz
PHASE	Three
WATTAGE	3700 W
POWER	5 HP
AMPERAGE	5 A to 12 A
AIR FLOW	1200 CFM
WEIGHT	473 lb

74 dB(A)

- Low Pressure, High Flow rate. 1200 CFM (2000 m³/h)
- Filter Cartridge Pulse Cleaning (manual or automatic)
- Heavy Duty Static Conductive wheels

**3-STAGE**
FILTRATION
SYSTEM**50 FT.**
CORD
LENGTH**1200 CFM**
AIR FLOW**MOTOR**
THERMAL
OVERLOAD*Continuous*
Duty 24-7**THREE**
PHASEAVAILABLE
DUST EXTRACTION ARM

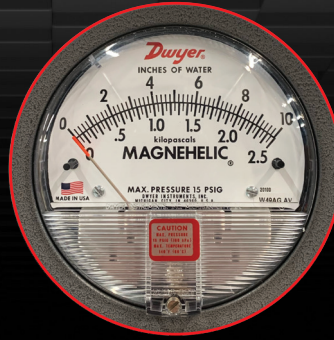
- 1 x Ø8" (200 mm)
- 2 x Ø6" (150 mm)



INCLUDED

Aluminized Spun Bond Conductive Filter Cartridge

Filtration Efficiency of
97% on 0.3 micron

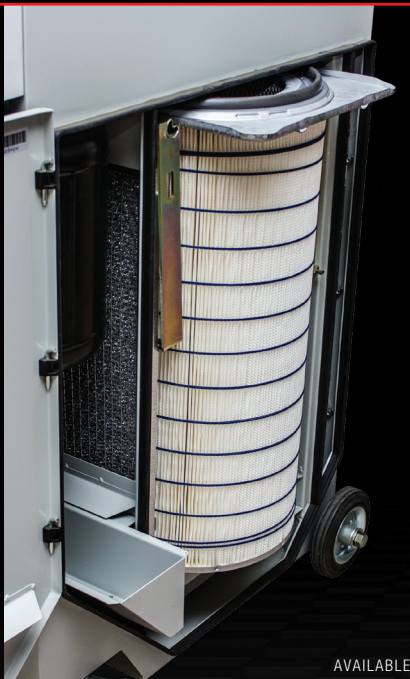


Differential Pressure Gauge Filter Blockage Indicator

MANUAL
FILTER CARTRIDGE PULSE CLEANING



Push Button Air Pulse Jet Cleaning



AVAILABLE

HEMIPLAT® Extreme Flame Retardant Filter Cartridge

Filtration Efficiency of
99.99% on 0.5 micron

AUTOMATIC TIMER
FILTER CARTRIDGE PULSE CLEANING



ON Time Purge Duration

OFF Time Purge Cycle

Quick Connect Compressed Air



SAFE FROM
ELECTROSTATIC
DISCHARGES

6 in. (160 mm)

6.6 ft. (2 m) Reach
10 ft. (3 m) Reach



8 in. (200 mm)

6.6 ft. (2 m) Reach
10 ft. (3 m) Reach

Pre-Separation System for Fine Dust

- Ideal for use in conjunction with the Dust Collector for recovering a larger volume of powders
- The HEC can be used with customer's existing Dust Collection System
- Available in a variety of sizes
- Available in Powder Coated and Stainless Steel

The HEC can be powered by either a low pressure or high pressure Vacuum / Dust Collector

HEC-200L (4W)

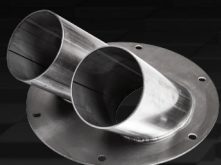
PRE-SEPARATION SYSTEM

SUCTION INLET	4 in. Camlock
AIR OUTLET	4 in. Camlock
CART TYPE	4-Wheel Dolly
DRY RECOVERY	55 gal.
LENGTH	24 in.
WIDTH	24 in.
HEIGHT	74 in.
WEIGHT	108 lb

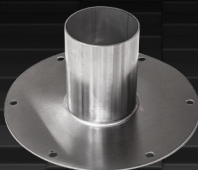
AVAILABLE

4 in. / 6 in. / 8 in.

INLET /
OUTLET



Flange
6 in.
Dual Port
for 3 in. Hoses



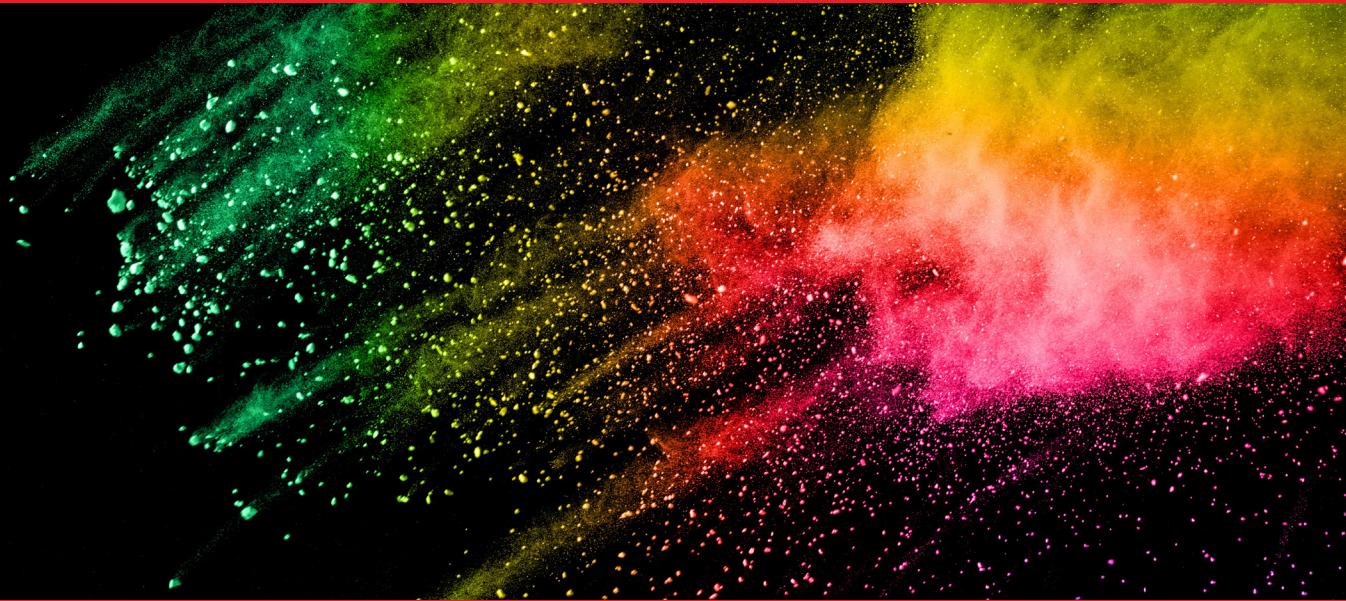
Flange
6 in.
Single Port
for 3 in. Hose



Flange
6 in. or 8 in.
STAINLESS STEEL
OR PAINTED FLANGE
• for 6 in. Hose
• for 8 in. Hose

tiger-vac.com

sales@tiger-vac.com | 1 800 668-4437



Tiger-Vac inc.
11 SW 12th Ave.#112
Dania FL 33004 USA

T. (954) 925-3625
F. (954) 925-3626
E. sales@tiger-vac.com

Tiger-Vac International Inc.
2020 Dagenais Blvd. West
Laval QC H7L 5W2 Canada

T. (450) 625-0099
F. (450) 625-3388
E. sales@tiger-vac.com

Tiger-Vac Europa S.r.l.
Via Marie Curie, 17
Ozzano Emilia, Italy

T. (39) 051 79.53.52
F. (39) 051 4695077
E. info@tiger-vac.it

Linked in

You Tube